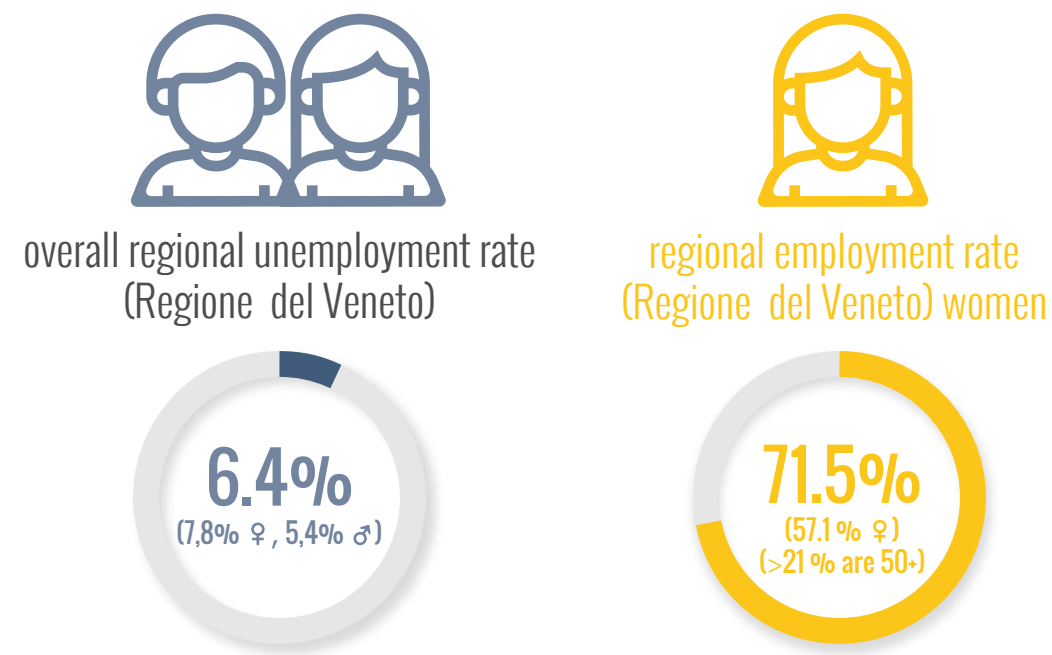
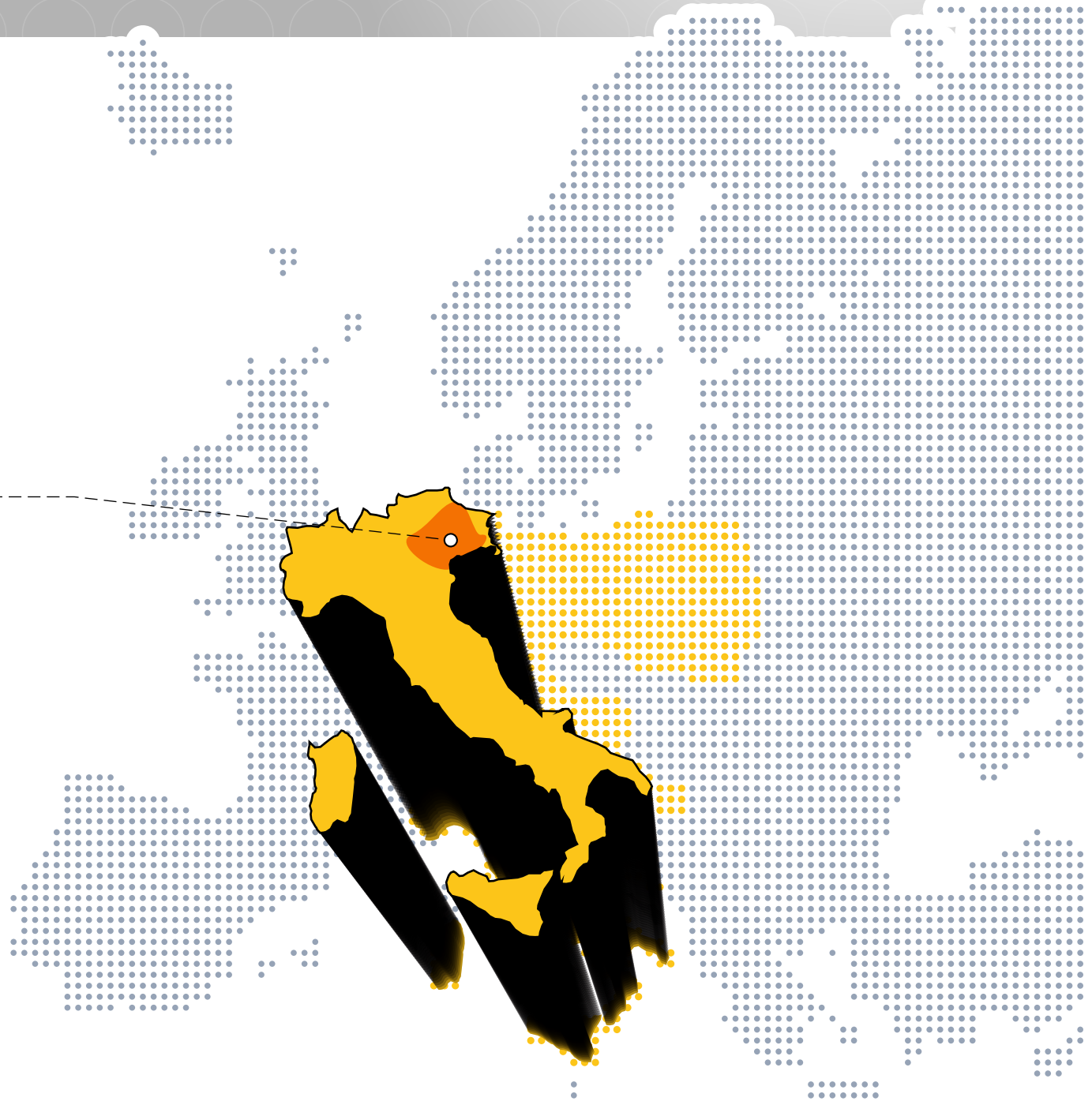


# 01. Data of the chosen regional target group

## TARGET GROUP long-term unemployed women



(source Rapporto Stat. Regione Veneto 2019)



# 02. Description of the chosen regional target group

The primary goal of Regione del Veneto and Enaip Veneto in the IN SITU project is to jointly develop and implement a tailored business support scheme to promote the integration of women into the labour market through social innovation and new social enterprises.

In the world of work, women still face higher unemployment, working poverty and precariousness. IN SITU will provide opportunities for skills development and engagement in social entrepreneurship, facilitating autonomy, financial independence and engagement in democratic life, giving focus to the role of women in the labour market and society.



# 03. Number of main key players in the regional triangle relevant for the chosen regional target group

